



PRODUCT CATALOGUE



**Your Vision for Tomorrow's Coding
and Traceability Solutions Today.**

TABLE OF CONTENTS

PAGE	DESCRIPTION
3	Our Story
4	Partner Brands
5	Industry Expertise
6	Printers
6	CIJ Printers (Continuous Inkjet)
7	Thermal Transfer Printer Series TTO
8	Laser Marking
9	Large Character High Resolution Piezo Printers
10	Print and Apply Labelling Machines
11	Thermal Inkjet Printers
12	Valvejet DOD Large Character Printers
13	Desktop and Industrial Printers
14	Consumables
16	CoLOS Software
17	Vision Components
18	Safety and Sensors
19	WITT Products
20	Our Services
22	2D Codes

OUR STORY

MITech is the evolution of 36 years of business in New Zealand, initially as a direct subsidiary of Markem-Imaje. In order to extend the support to customers in NZ and the Pacific, MITech was established as a NZ owned and operated company to enhance the distribution of Markem-Imaje products, part of Dover Corporation, a NYSE top-200 listed industrial company.

The new-found autonomy of MITech has enabled the business to carefully select additional complementary technologies from other leading international brands to better serve the local manufacturing sector. This has resulted in other class-leading products joining the MITech stable, such as Cognex Vision Systems, gas analysis and mixing equipment for modified atmosphere packaging from Witt of Germany and a world class range of product switching and safety sensors from Leuze Germany.

MITech has established a leading position in New Zealand and the Pacific, founded on a culture of excellent customer service and absolute value. A total-cost-of-ownership model underpins the MITech philosophy to ensure that all customers receive a transparent and cost-efficient solution over the complete life of their investment. Supported by an innovative engineering team, a large and experienced service team, we provide full service support throughout the life of our products including design and installation.



OUR VALUES

MITech is committed to the highest level of ethical values and standards achieved by leadership, training, individual accountability, and collective growth.

We highly value and prioritise:

- Our team members and their families, starting with a focus on everyone returning home safely.
- Maintaining strong business integrity including measures of delivering high value, innovation, and dedicated support.
- Open and honest collaboration seeking feedback from our customers, suppliers and related business community.
- Upholding the applicable laws and regulations of the regions where we conduct business, noting our responsibility for safety, the environment, employment, and fair trade.

PARTNER BRANDS

MITech selects technology partners who can provide best-of-breed solutions, backed up by robust support and ongoing research and development.



MITech is the sole New Zealand distributor for Markem-Imaje technology. Markem-Imaje is a world-leading designer and manufacturer of inkjet, thermal transfer, laser, print and apply labelling and coding systems. Through our commitment and knowledge, we exceed the expectations of our customers and shareholders by setting the standard for delivering the most reliable and innovative product identification solutions in every corner of the world.

COGNEX

Exclusively offered by MITech in NZ. Cognex machine vision supports product identification with the option of direct integration with CoLOS, the information management system from Markem-Imaje. Cognex is the world's leading provider of vision systems, software, sensors, and industrial barcode readers used in manufacturing automation.

Polyt^{tij}

MITech is the exclusive New Zealand distributor for Polytij, polymer thermal ink technology, including the licenced HP advanced cartridge consumables. Polytij specialise in entry level thermal inkjet solutions with a high range of functionalities and ink types to print multiple languages, code types, date formats and resolutions.

Honeywell

MITech provides and supports the complete range of Honeywell printers. Honeywell has manufactured well over 1 million printers worldwide. Well-known for their robust and flexible product range, Honeywell products feature solid die cast alloy framing, cog driven drive system and plug and play option modularity.

 **Leuze**

Leuze electronic is a global success story as a technology driver with subsidiaries and a variety of distributors worldwide. MITech provides the complete product range including: barcode scanners, smart cameras, barcode positioning systems, laser measurement sensors, light curtains & grids, laser scanners, safety PLC and safety relays switches, and industrial sensors.



MITech is the sole distributor for WITT technology in New Zealand. WITT is a global player delivering high quality gas control and gas safety equipment to more than 60 countries. The company is headquartered in Germany and has partners throughout the world.

BASLER

Basler is a leading international manufacturer of high-quality cameras, camera accessories, software and solutions for applications in factory automation, medicine, transportation and a variety of other markets.



Smart Vision Lights is the leading designer and manufacturer of LED lighting solutions for any type of machine vision or automation camera application.



apgv^{VISION}



FUJINON



INDUSTRY EXPERTISE

With deep industry expertise, we empower businesses to thrive by providing tailored solutions that enhance efficiency, foster innovation, and ensure compliance.



Food and Beverage

Whether your business is a massive global exporter, a small scale artisan enterprise or somewhere in between, you need cost effective marking and coding and traceability solutions, as well as gas analysers and leak testers for MAP Packaging.



Non-food FMCG

The key words here are 'fast moving'. You have production targets to reach and markets to satisfy so there's little room for downtime. Our focus for your sector is trouble free solutions that support the efficiency and speed of your manufacturing operation.



Pharmaceutical

Comply to standards with marking and coding solutions that work with your packaging materials – blister packs, plastic bottles, labels, metal foils, tubes, cartons, cases and shipping pallets. We'll help you to select the most appropriate technology for your needs.



Health and Beauty

Confirm the integrity of your products with codes that customers find easy to read. MITech's market leading technologies enable you to meet the compliance demands of your sector in a way that doesn't detract from the shelf appeal of your products.



Extrusion Manufacturing

We specialise in high-speed, high-contrast marking and coding solutions for the extrusion industry. If you have out-of-the-ordinary marking requirements, stemming from a unique product, our expertise can help with identification, branding and traceability.

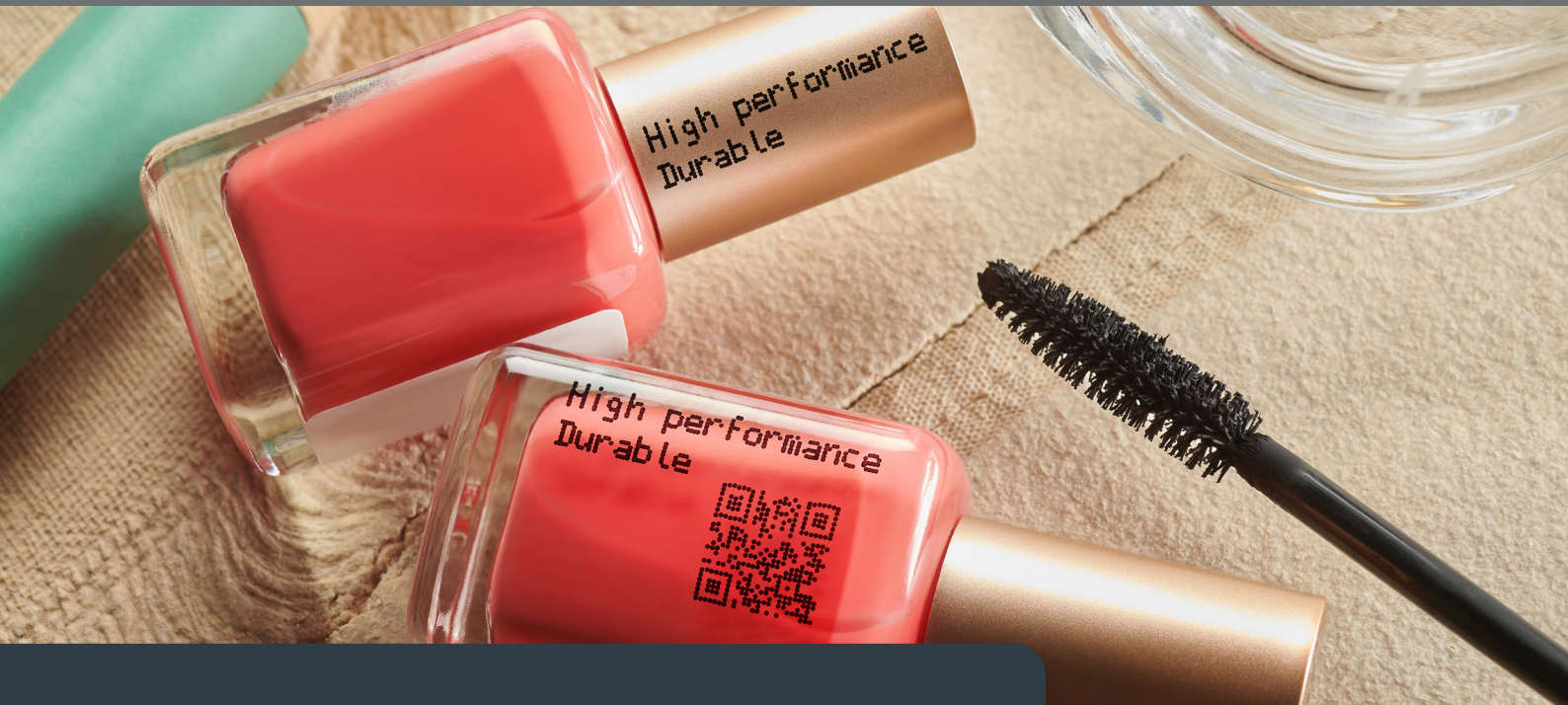


General Manufacturing

If you can make it, we can mark it. MITech's cross-sector experience qualifies us to take on any marking, coding or traceability requirement. The solutions we recommend take into account the size of your operation, as well as your product's specific needs.

PRINTERS

We've curated a comprehensive printer range that meets the needs of businesses of all sizes — small, medium, and large.



CIJ PRINTERS (CONTINUOUS INKJET)

For efficient coding on all packaging types

The Markem-Imaje CIJ printer series is designed for seamless, user-friendly operation, enhancing your printing processes. With over 40 years of experience, this series improves product traceability by providing the essential codes you need. Our extensive portfolio of continuous inkjet printers makes the Markem-Imaje CIJ series one of the most flexible and reliable options available today.

Key Features:

- **Versatile Applications:** Print text and 2D codes on various substrates & small areas.
- **High-Speed Performance:** Achieve superior printing speeds for optimal efficiency.
- **User-Friendly Design:** Simplify daily operations with an intuitive interface.
- **Custom Solutions:** Benefit from a wide range of ink options for tailored solutions.

Elevate your packaging with the Markem-Imaje continuous inkjet printing series, ensuring top-quality codes for all your packaging needs.



THERMAL TRANSFER PRINTER SERIES TTO

For a consistent high-quality printing on flexible packaging films and foils

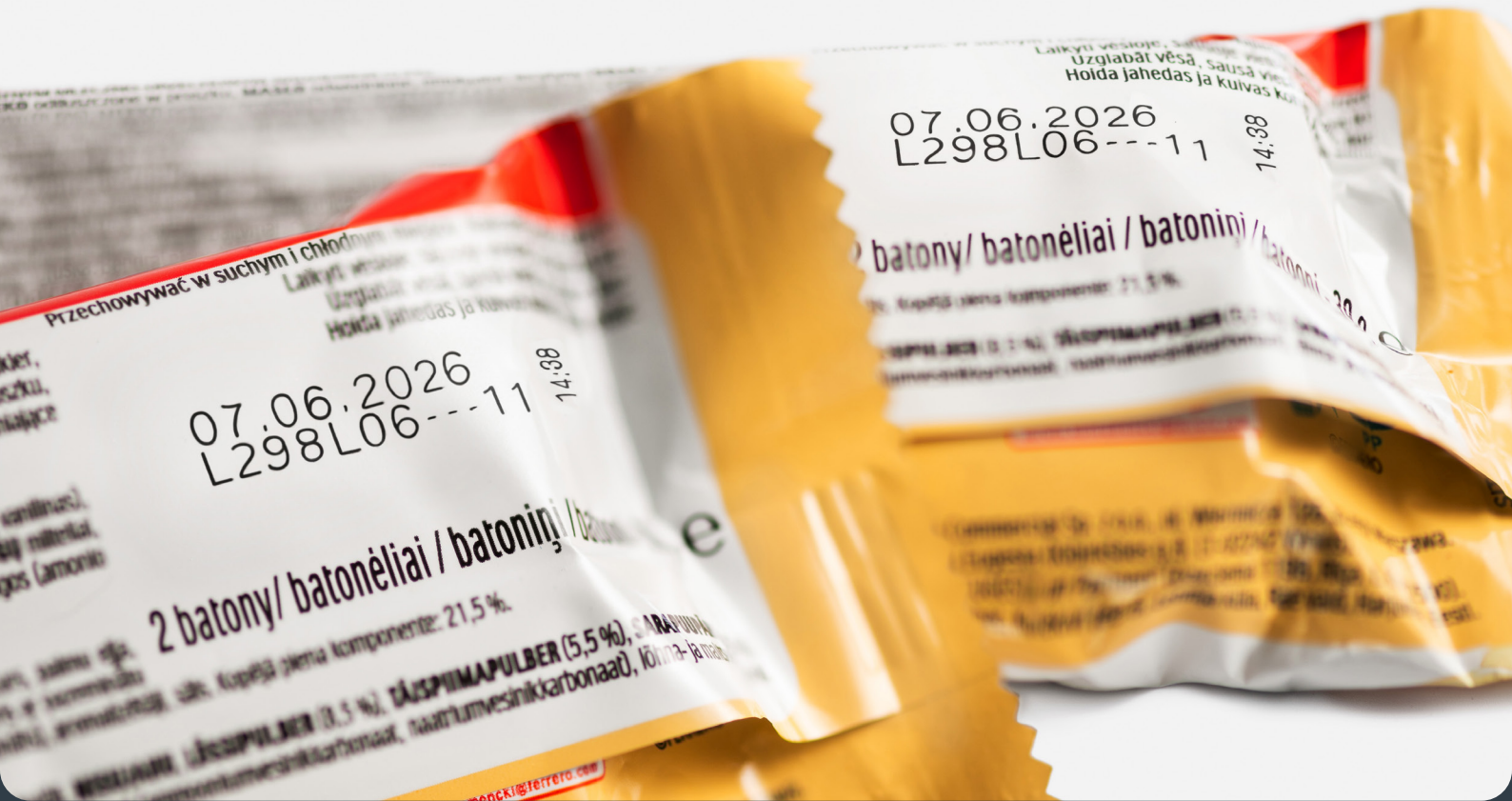
The Thermal Transfer Printer Series (TTO) by Markem-Imaje is engineered specifically for digital printing on flexible materials, making it an ideal choice for a variety of applications. With over 30 years of pioneering expertise in thermal transfer technology, our SmartDate® Series delivers reliable, high-quality GS1 compliant codes on flow-wrappers, bags, tray seals, pouches, sachets, vacuum packs, and labels.

Key Features:

- **Superior Printing Speeds:** Achieve fast, efficient printing to keep your production lines moving.
- **Intuitive User Interface:** Easily navigate the printer with a user-friendly profile configurator.
- **Supportive Tutorials:** Access helpful resources to simplify daily operations.
- **Versatile Applications:** Print barcodes, logos, expiration dates, shift codes, and real-time codes across various industries.

Optimise your flexible packaging processes with the Markem-Imaje TTO thermal transfer printer series for consistent, high-quality results.





LASER MARKING

High-quality, fast, chemical-free, permanent coding or marking

Markem-Imaje offers state-of-the-art laser marking machines designed for high-quality GS1 compliant coding and marking. Our technology includes CO2, Fiber, and UV (ultraviolet) lasers, which utilise methods like ablation, etching, foaming, and laser scribe imaging.

CO2 Laser Marking: This technology is perfect for marking on films, laminates, PET bottles, inked paper, and metal caps.

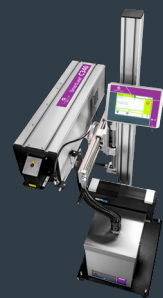
Fiber Laser Marking: Ideal for bare metals and rigid plastics, fiber lasers are extensively used in the automotive, electronics, and fast-moving consumer goods (FMCG) sectors. They provide high-speed printing over large coding areas, perform well in tough environments, and enable multi-head scribing for high-contrast codes.

UV Laser Marking: Excellent for delicate substrates, UV lasers create a photochemical reaction, making them suitable for newer, thinner mono films that are more environmentally friendly. This technology serves as a reliable alternative when CO2 or fiber lasers are not suitable for certain materials.

Key Advantages of Laser Marking:

- **No Consumables:** Eliminate the need for inks and other materials.
- **Minimal Maintenance:** Laser printers require no jet maintenance.
- **Versatile Applications:** Effective on a wide range of substrates.
- **Indelible code:** Highest form of code security

Markem-Imaje's laser marking series includes advanced CO2 and UV Fiber laser printers designed for high-speed applications on demanding packaging lines, ensuring exceptional quality and reliability. Enhance your coding and marking capabilities with our innovative laser solutions today.



LARGE CHARACTER HIGH RESOLUTION PIEZO PRINTER SERIES

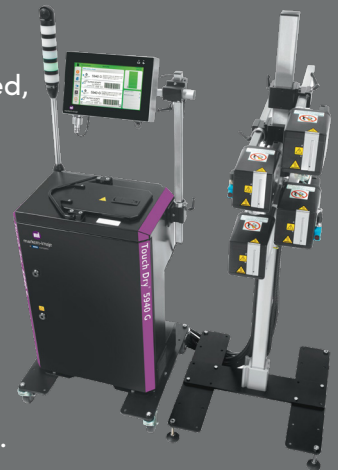
LCIJ or Piezo printer is the leading solution for secondary case coding on corrugates, GS1 compliant barcodes, logos and multilanguage packaging

Markem-Imaje's LCIJ technology offers exceptional print quality and speed, making it a cost-effective solution for secondary casing, particularly on corrugated and pallets. Our Large Character Touch Dry printers utilise advanced Piezo drop-on-demand technology to digitally apply ink on a wide range of substrates. The ink is heated to create touch-dry hot melt, perfect for large case coding, films, rigid plastics, and ceramics.

Key Benefits:

- **High Uptime and Reliability:** Minimise downtime with our robust printing solutions.
- **Seamless Integration:** Easily incorporate into existing production lines.
- **Non-Hazardous and Clean:** Environmentally friendly and safe to use.

With extensive expertise in hot melt and touch-dry inks, Markem-Imaje delivers darker, high-quality prints, ideal for secondary case packaging that meets GS1 standards for 1D and 2D codes. Upgrade your coding capabilities with our advanced LCIJ printers today.



Dry® Hot Melt
markem-imaje
a DOVER company
High-quality codes

5006 Touch Dry® Hot Melt WHITE Ink
markem-imaje
a DOVER company
High-quality codes on dark poly films

PRINT AND APPLY LABELLING MACHINES

Reliable GS1 compliant solutions for all case and pallet labelling requirements

Markem-Image's print and apply labelling machines are designed to handle a diverse array of materials and shapes, delivering exceptional performance with resolution options of 200 and 300 dpi. Our entire series ensures the highest quality printing across all available technologies, producing "A" grade GS1-compliant barcodes.

Key Features:

- **Safe and User-Friendly:** Our industrial labellers are designed for easy operation.
- **Optimised Operational Intervention:** Streamlined processes to minimize operator involvement.
- **Unparalleled Application Rates:** Achieve faster labelling speeds for increased productivity.
- **Wide Range of Interchangeable Applicators:** Flexibility to adapt to various labelling needs.

Leverage decades of expertise from the world's leading print and apply supplier to maximise your production uptime, enhance performance, and reduce downtime. Experience cost-effective ownership with Markem-Image's advanced labelling solutions.



THERMAL INKJET PRINTER

Provide a high-quality marking on a variety of substrates, including in 3D form

Markem-Imaje's thermal inkjet printer series (TIJ printers) deliver high-quality compliant barcodes on a variety of uneven surfaces, providing an effortless coding solution with minimal maintenance. Our advanced thermal inkjet marking technology is perfect for a wide range of substrates, including cardboard, metals, plastics, foils, and wood, making it a cost-effective choice for diverse industries.

Key Benefits of Markem-Imaje Thermal Inkjet Printers:

- **High-Quality Compliant Codes:** Ensure your products meet industry standards with clear and precise barcodes.
- **User-Friendly Design:** Our TIJ printers are easy to operate, requiring little to no maintenance, which streamlines your production process.
- **Versatile Substrate Compatibility:** Achieve exceptional marking results on various materials, including irregular and moving surfaces.

Markem-Imaje's thermal inkjet printers represent exceptional value for money, making it easier than ever to achieve high-quality coding on both stationary and dynamic surfaces.

Our **Polytij thermal inkjet printers** are specifically designed for seamless integration into manufacturing and production lines, enhancing your operational efficiency.



VALVEJET DOD LARGE CHARACTER PRINTERS

Valvejet also known as large character printers are a cost-effective, easy to use solution for contactless printing on multiple substrates

Markem-Imaje's Valvejet or large character printers are trusted across various sectors, including electronics, extrusion, logistics, pharmaceuticals, and fast-moving consumer goods (FMCG). Utilising drop-on-demand inkjet technology, also known as piezo electric inkjet printers, these printers deliver exceptional performance on a diverse range of substrates, including corrugated materials, cartons, cardboard boxes, plastic films, containers, and even metal parts.

Key Features of Markem-Imaje Valvejet or Large Character Printers:

- **Versatile Applications:** Ideal for industries ranging from industrial manufacturing to FMCG, our printers excel in low-resolution marking, providing robust and durable results.
- **Compact Design:** Perfect for compact or hard-to-reach spaces, making them suitable for a variety of production environments.
- **Low Maintenance:** Designed for ease of use, these piezo printers require minimal maintenance, allowing for uninterrupted operations.
- **Durability in Challenging Conditions:** Valvejet technology performs exceptionally well in dusty or humid environments, ensuring reliability in diverse settings.

Markem-Imaje's Valvejet or large character printers offer a powerful solution for efficient marking operations, making them an excellent choice for businesses seeking quality and reliability.





DESKTOP AND INDUSTRIAL PRINTERS

Printers for every need from low-volume to rugged, industrial-strength printing.

Honeywell desktop barcode printers are designed to meet a wide range of printing needs, from economical low-volume applications to rugged industrial-strength solutions. With their highly intuitive and flexible design, these printers are the ideal choice for various light-duty label, ticket, and tag printing applications, available in multiple configurations to suit your specific requirements.

Honeywell Desktop Printers

- **Versatile Applications:** Perfect for light-duty printing, Honeywell desktop printers cater to various environments, ensuring high-quality results.
- **User-Friendly Design:** Easy to operate and set up, these printers streamline your labelling processes, saving time and effort.

Honeywell Industrial Label Printers

For those seeking industry-leading performance, the Honeywell industrial label printer family stands out as the smart choice. Known for their durability and reliability, these printers deliver:

- **Error-Proof Labelling:** Ensure accuracy and consistency in every print.
- **Easy Programmability:** Simplify setup and operation with user-friendly programming features.
- **Advanced Networking Connectivity:** Seamlessly integrate into your existing systems for efficient workflows.
- **Security Features:** Protect your printing processes with advanced security options.
- **RFID and Linerless Technology:** Adapt to modern printing needs with innovative features.

Whether you require a commercial printer for light-volume needs or a rugged solution for around-the-clock performance, Honeywell industrial printers are built to handle any application.

CONSUMABLES

Ensure business continuity, control costs, and maximise sustainability. For decades, Markem-Imaje have developed over 500 consumable solutions to meet your evolving needs and expectations including compliance to stringent global standards. Our genuine Markem-Imaje ink products and consumables enhance uptime by reducing maintenance and changeovers, making them a superior choice compared to third-party supplies.



CIJ INKS

The Markem-Imaje CIJ ink range includes:

- Food-grade inks which comply with EEC requirements
- Thermochromic inks that change color indicating temperature change
- Washable inks for returnable bottles
 - MEK-free* options
- Water-based and alcohol-based inks for environmentally sensitive applications
 - Anti-diversion inks
- Pigmented inks for high contrast applications
 - Fade-resistant inks for vulcanization applications



TIJ INKS

The Markem-Imaje thermal transfer ink range includes:

- Industry-best drying time
- Long chemical decap for perfect prints after idle
- Clean snap-in and -out cartridges
 - Wide range of substrates
 - High resolution printing
 - Great optical density
 - Limited maintenance
- Proven, reliable HP® 2.5 Thermal Inkjet Cartridge



DOD INKS

The Markem-Imaje DOD ink range includes:

- Food-grade inks which comply with EEC requirements
- Thermochromic inks that change color indicating temperature change
- Washable inks for returnable bottles
 - MEK-free* options
- Water-based and alcohol-based inks for environmentally sensitive applications
 - Anti-diversion inks
- Pigmented inks for high contrast applications
 - Fade-resistant inks for vulcanisation applications



TOUCH DRY HOT MELT INKS

The Markem-Imaje hot melt ink range includes:

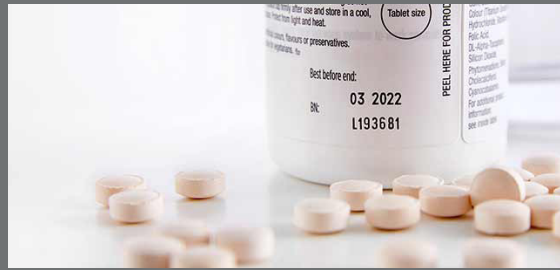
- Solid inks at room temperature and instantly dry after printing
 - Flexible film inks for high speed flow wrapping applications
- Variety of inks to produce sharp barcodes on cardboard cases
 - Inks developed with FDA approved ingredients for food contact
- Temperature specific inks to print in and for cold temperature applications



LEGACY FLUID INKS

The Markem-Imaje ink range includes:

- Pharmaceutical inks
- Inks that are RoHS compliant
- Printing inks for pad printers, screen printing or direct/offset printers
- Solvent resistant inks
- Heat, UV or air cure inks



TTR RIBBONS

The Markem-Imaje Thermal Transfer Ribbon (TTR) range includes:

- Ribbons suitable for near edge or flat head printers
- Ribbons which comply with FDA, LfgB and RoHS requirements
 - Solvent resistant ribbons
- Wax/resin and resin ribbons to print on a variety of flexible packaging
- Ribbons for a wide range of print and apply label media
 - Light and water resistant ribbons for environmentally sensitive applications



SMARTDATE X SERIES RIBBONS

Markem-Imaje SmartDate X Series ribbons cover all flexible packaging coding needs, whether basic or complex.

- SmartDate Xpert Ribbons are full resin ribbons intended for most demanding applications that require high levels of resistance to solvents, oil, and heat
- The SmartDate Xtra Ribbons offer a high level of versatility to code on most flexible packagings while ensuring durable codes from the production line until customer purchase
- SmartDate Xceed Ribbons are the most cost-effective ribbons to secure codes, ensure readability without compromising on quality.



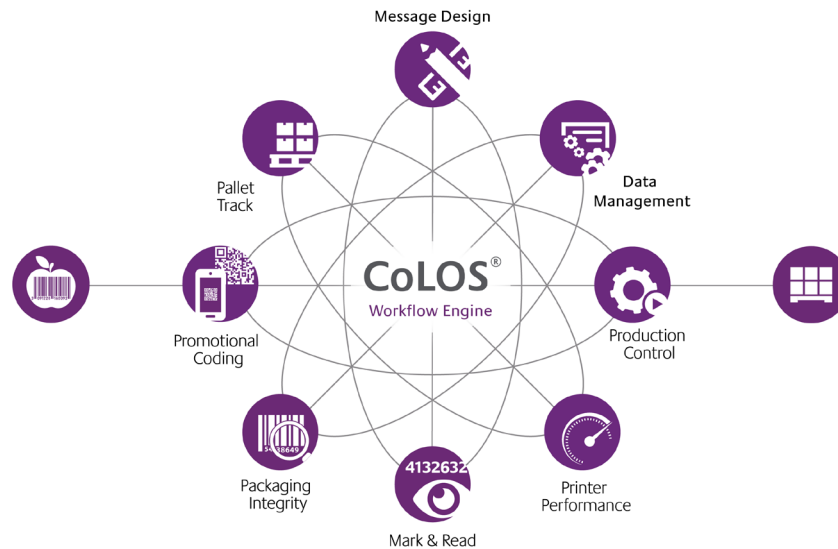
LABEL MI RIBBON SERIES

Markem-Imaje genuine self-adhesive labels and ribbons solutions to cover all your case and pallet labeling needs.

- Label MI Premium & Ribbon MI Premium are intended for the most demanding applications requiring high rub and solvent resistance while enhancing your packaging design
 - Label MI Performance & Ribbon MI Performance offer a high level of versatility to code on a wide range of materials ensuring durable and compliant codes even at low temperatures.
- Label MI Prime & Ribbon MI Prime are the most cost-effective solution to secure printed data and ensure reliable code quality
 - Label MI Direct are self-adhesive labels intended for high-speed labeling without compromising on quality. No ribbons required

CoLOS SOFTWARE

Minimise wastage, achieve compliance, and drive efficiency



Unlock the full potential of your packaging operations with our comprehensive Industrial Software Solution, designed to optimise every aspect of your production line. Our Packaging Intelligence solutions can be purchased as modules to cover everything from message design management to verification, inspection, pallet tracking and beyond. By seamlessly integrating cutting-edge technologies with our proven expertise, we maximise efficiency and drive business growth. Experience a smarter, more agile enterprise with our holistic approach and tailored integration strategy.

Together with you, we enable your digital supply chain – today and tomorrow.

Key features – from code to connected products

CoLOS Message Design

Design complex messages for all printer technologies in one user-friendly interface using the full range of data field types.

CoLOS Design Control

Control images in terms of user roles, approval flows, change logs and more, to be used at various production sites.

CoLOS Data Management

Link message design fields to ERP and stock-keeping units (SKUs) to auto-populate messages with SKU data.

CoLOS Mark & Read

Verify and inspect to confirm that the product, packaging & codes are present, readable, and contains the right data, using fully integrated vision cameras.

CoLOS Auto Pallet Track

Applies compliant tracking labels (LPN or GS1 SSCC) to pallets automatically and reports data in real-time to supply chain information systems.

CoLOS Promotional Coding

Applies unique marketing codes to the products at full line speeds, enabling more flexibility to achieve both always-on and "on demand" promotions.

CoLOS Printer Performance

Get real-time alerts and instantaneous access to printer performance indicators and dashboards on your mobile devices.

CoLOS Production Control

View and download complete production line jobs in one step from an easy-to-use operator interface or automate the process from line control automation equipment.

CoLOS OEE

Gain insights into printer performance, losses and bottlenecks so that you can take corrective measures in real-time and follow-up on your line improvement gains.

CoLOS Manual Pallet Track

Supports the manual application of the compliant tracking labels (LPN or GS1 SSCC) to pallets when the packaging lines are not automated.

CoLOS IT/OT Integration

Allows real-time communication between enterprise data and equipment/technologies involved in the packaging operations for better collaboration.

VISION COMPONENTS

Machine vision can monitor production lines, detect defects, identify, track, and sort parts, guide robots and perform other inspection operations which can greatly improve product quality, reduce wastage, and lower manufacturing costs, leading to efficient delivery of the highest quality products. We supply a wide range of machine vision cameras and components to Manufacturers, Systems Integrators, and OEMs.

SMART CAMERAS

Self-contained, industrial-grade vision systems that combine a library of advanced vision tools with high-speed image acquisition and processing.



BARCODE READERS

Industrial, image-based fixed mount and handheld barcode readers for 1D and 2D codes, from printed labels to direct part mark (DPM) codes.



3D

High-resolution 3D images combined with industry-leading 3D vision tools enable reliable and accurate solutions to applications such as assembly verification, in-line measurement, and robotic guidance.



VISION SOFTWARE

Provides industry leading vision tools in a format designed for any development need. With a broad-based, industrial-grade tool set, choose between a programmatic or graphical interface to get the industry's most robust tool library.



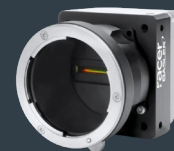
AREA SCAN CAMERAS

Offering top-quality images and outstanding price/performance ratio for Factory Automation. Intelligent Traffic Systems and many other applications. The new SWIR series reveals what is hidden to the human eye using the latest short wavelength infrared technology.



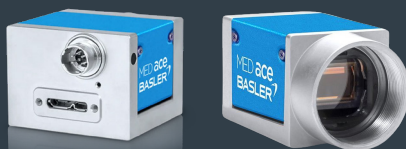
LINE SCAN CAMERAS

Especially well-suited for applications that need both high speeds and high image quality with a seamless recording style that allows for inspections of long objects or endless webs of material.



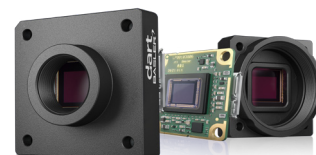
MEDICAL & LIFE SCIENCES

Equipped with the latest CMOS sensors and versatile MED Feature Sets, the Basler MED ace is perfect for applications such as ophthalmology, microscopy or lab automation.



EMBEDDED

High-quality cameras and camera modules, Add-on Camera Kits for existing processing boards or complete development kits means fast prototyping.



SAFETY AND SENSORS

In a constantly changing industrial world, we work together with our customers to find the best solution for their sensor applications: innovatively, precisely and efficiently.

SWITCHING SENSORS

Sensor solutions that detect an object optoelectronically, ultrasonically or inductively and output a robust switching signal. We have a large number of different operating principles and designs.



MEASURING SENSORS

Measuring sensors can actively check distances, position system parts and monitor other parameters in order to intelligently and independently initiate actions and, e.g., intervene in processes for control purposes.



SAFETY

As one of the technology leaders in the area of optoelectronic safety sensors for industrial automation, we offer effective personnel protection devices in accordance with international safety standards.



IDENTIFICATION

The identification of bar codes, 2D codes and RFID transponders is among our core competencies. This range of perfectly matched products offers the highest level of flexibility. The devices ensure absolute reliability and maximum availability for systems of all types.



NETWORK AND CONNECTION

A sensor, irrespective of how it operates, is always just a small part of a complex control system. For this reason, the maximum compatibility with common fieldbus environments is a basic requirement of all of our developments.



OPTICAL DATA TRANSMISSION

The transfer of data and the connection of devices in a wide range of fieldbus environments are also given high priority. Our innovative connection concepts and universal configuration solutions will also reveal unexpected efficiency potential in your applications.



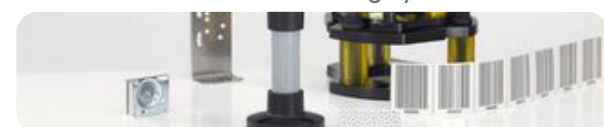
INDUSTRIAL IMAGE PROCESSING

In our automated industrial landscape, the use of industrial image processing will increasingly become standard. Even today, modern devices allow camera systems to be used in many standard applications, thereby significantly increasing the reliability and availability of your plant systems.



ACCESSORIES

Simple mounting and convenient handling are important factors when it comes to the efficient use of sensor technology. It is for this reason that we place great value on, e.g., flexible mounting solutions and simple integration through variable connection technology, alignment aids and innovative mounting systems.



WITT PRODUCTS

WITT is a global player delivering high quality gas control and gas safety equipment to more than 100 countries.

GAS ANALYSERS

Deliver quick and precise gas concentration measurements in mixtures, offering versatility for various applications. Featuring state-of-the-art sensors and intuitive controls, these analysers ensure accurate results and maintain the quality of your processes. They can be used as standalone units or integrated into gas mixing systems, depending on your needs.

Available as stationary or portable units, WITT gas analysers support both sampling and continuous analysis for a wide array of technical gases, including oxygen, carbon dioxide, helium, hydrogen, and methane. These devices are ideal for use in the food and pharmaceutical industries, healthcare settings, gas supply monitoring in thermal processing plants, and many other industrial applications.

WITT also provides specialised versions for indoor air monitoring and humidity measurement or dew point analysis, ensuring comprehensive solutions for your gas analysis needs.



GAS MIXERS

WITT offers high-quality gas mixers and gas dosing systems for two or more gases, especially for high and strongly fluctuating gas mixture flow rates.

Depending on customer requirements, gas mixers are available in different versions for different output ranges and almost all technical gases: These include argon (Ar), carbon dioxide (CO₂), oxygen (O₂), nitrogen (N₂), hydrogen (H₂), methane (CH₄), helium (He), carbon monoxide (CO) and lean air.

Gas mixers can be operated conveniently via intranet, internet or mobile devices. Of course, the gas mixers can also be combined with other WITT products such as gas analysers and supplied as integrated complete solutions.



PACKAGE LEAK DETECTORS

Ensuring that packages are completely leak-tight is crucial for quality assurance. Despite the best efforts in the packaging process, leaks—often microscopic—can occur due to defects in sealing or materials. As a result, package leak detection and seal integrity testing have become essential practices, particularly in the food, pharmaceutical, and chemical industries.

WITT's LEAK-MASTER® range offers reliable solutions for detecting leaks and testing seal integrity across all types of packaging, including those with modified atmosphere (MAP) or vacuum seals. To enhance your quality assurance processes, you can choose from equipment designed for random or in-line testing, utilising CO₂ detection or bubble testing methods with a water bath. Trust WITT to help maintain the integrity of your packaged products.



OUR SERVICES

Every product or system we sell is backed up by a complete support service.

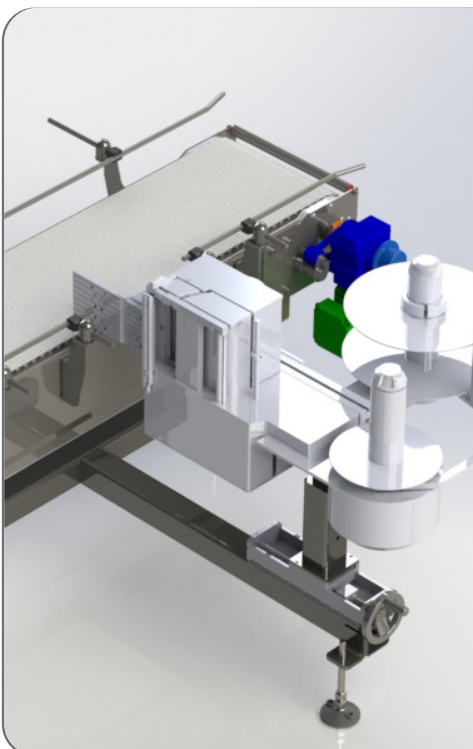


NATIONWIDE SUPPORT

From your initial call to our dedicated service line; 0800-MITECH (0800 648324) we have a committed team on 24 hour call ready to help.

Our experienced technicians are based from well located North Island hub to provide the timeliest response nationally including the Pacific Islands. Our aim is to minimise production downtime (and total costs) when things go wrong and our expertise is needed. Initially we can assist remotely while, following customer confirmation, we plan to reach your site safely, quickly and well prepared.

- MITech customers can be assured that our management standards including Work Safe, SOP and Insurance policies meet the highest compliance ratings for work on third party sites.
- Our vehicles are fully equipped with the parts required to cover the majority of issues.
- Our networked communications and machine traceability database enhances assessment, time efficiency and resolution delivery.
- Our central Head Office facility, parts store, and staff are resourced to back our regional customer support network.
- Operational machines ready for sale/lease and installation are on hand for immediate back-up covering most technologies.



ENGINEERED SOLUTIONS

At MITech, our engineering team is dedicated to delivering tailored solutions for your custom projects. We specialise in integrating advanced hardware, software, and complementary technologies into both new and existing production lines, ensuring seamless implementation from start to finish.

The scope of work includes: Solid Works 3D CAD design, prototyping parts, detailed costing, project management, fabrication, software engineering, integration, testing and commissioning.

We welcome your inquiry to discuss your development plans and projects.



LEASE AND RENTAL

MITech offer a range of lease and rental options to meet your product marking and coding requirements.

MITech understand the changing needs of your production schedule and the cost of purchasing capital equipment for work which may only be short term. Rental equipment for short term projects or production back-up, could be the fast efficient solution.

Lease options are also available if you require equipment on a long-term basis. MITech welcome discussions to arrange operating and finance lease packages to suit your needs.



MIPLAN

Protect your valued technology investment and secure your cost and production targets by planning ahead with MIPlan maintenance plans.

MITech will work with you to plan efficient maintenance schedules from our extensive data base and the specific factors to ensure maximum production availability. Managed servicing schedules will let you focus on your core activity.

MIPlan schedules can also be customised to meet the needs of your business from weekly visits to your site, to annual inspections and maintenance.

Contact us today to discuss your needs, and book a visit from our factory trained service team.

We can also help with Staff Training, waste inkjet fluid recovery and disposal.

- 12 ,24 & 36 Month maintenance agreement options to fix your costs.
- Options for periodic inspections.
- Discounted spare parts fitted during MIPlan visits.
- Preferred support access for MIPlan customers.
- Serious pain reduction from mitigating costs and production losses.



PROACTIVE MAINTENANCE

Prevention is always better than a cure, so we recommend our experienced service team regularly maintain your MITech solution. Your maintenance programme will be customised to your needs – from a simple once-a-year onsite inspection and service to regular visits to support non-stop production.



WASTE RECOVERY & RECYCLING

MITech is committed to the best sustainability practices, including recycling and waste recovery. We ensure that waste solvents, inks and cleaning solutions are efficiently recovered from your premises – a practice that helps your carbon footprint as well as ours. Waste collected from our customers is carefully sorted, then despatched for recycling. Anything that can't be recycled is disposed of in a responsible manner.

THE 2D CODE REVOLUTION IS HERE.

MASTER THE NEW DIMENSION



2D barcodes offer significantly greater information capacity than traditional linear barcodes, presenting exciting opportunities for businesses and customer engagement. Unlike standard QR codes, GS1 2D Barcodes beep at point-of-sale, functioning like traditional barcodes while delivering enhanced data.

GS1 NZ is collaborating with retailers and product manufacturers to ensure that all retail point-of-sale systems in New Zealand can scan 2D barcodes by the end of 2027.

GS1's new standard shifts the focus from conventional 1D barcodes to a connected 2D barcode system. This advancement provides comprehensive product information and supports various applications for brand owners, distributors, retailers, and consumers alike. Importantly, both 1D and 2D barcodes will continue to coexist for the foreseeable future.

The GS1 Digital Link is a new standard that connects essential GS1 application identifiers, such as GTIN, batch number, best before date, and serial number, to the Internet. This digital connectivity allows easy access to a wealth of information, from brand details and product ingredients to manufacturing processes, distribution traceability, and product authenticity—all essential for success.

ADVANTAGES OF 2D CODES

- Encoding a large amount of data into a small code e.g. numbers, all types of characters, binary data, control codes etc..
- Printing in a small area. 2D codes use approximately 10 times less space than a traditional 1D barcode.
- Readable regardless of the scanning angle. They can be read at high speed regardless of the scan angle.
- Resistant to dirt and damage. 2D codes have an error correction function and data can be restored even if a code is partially stained or missing.





Unlock the potential of your connected product strategy with our cutting-edge 2D code printing and innovative marking and coding solutions. We combine advanced technology with management software to bring your vision to life, embedding valuable information directly into your supply chain.

With seamless integration of proprietary coding technologies, smart software, vision systems, certified consumables, and comprehensive services, we empower you to stay ahead. Our solutions ensure products and consumers remain safe, informed, and connected at every step of the supply chain.

KEY BENEFITS

- Embed, control and seamlessly manage verified data in GS1 Digital Link codes. From the production to the consumer's hand.
- Print inline and verify, GS1 compliant QR codes, with high contrast at high speed and even on 3D surfaces.
- Optimise business operations through production efficiencies, late-stage-customisation, SKU and packaging reduction.
- A fully integrated traceability and brand protection solution across the supply chain.
- Connect brands with their consumers, drive loyalty, increase campaign conversions and sales lift while gaining behavioural insight

BEST PRACTICE USE CASES: WHEN TO USE GS1 DIGITAL LINK

INVENTORY & PACKAGING

- Improve inventory accuracy
- Gain availability and location insight
- Optimise store processes
- Reduce waste, ensure freshness
- Offer late-stage-customisation and SKU optimisation
- Turn packaging into campaign and engagement channel
- Provide enhanced consumer experience

TRACEABILITY & BRAND SAFETY

- Ensure supply chain traceability and visibility
- Allow product authentication and fight counterfeiting
- Build consumer trust and food safety transparency
- Share provenance, nutritional information and ingredient sourcing info
- Prevent sale of expired or recalled product at Point-of-Sales
- Achieve regulatory compliance

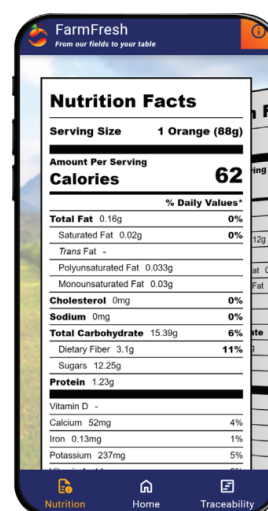
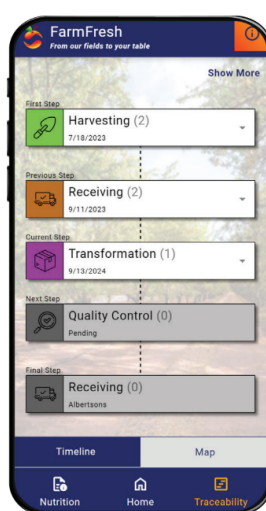
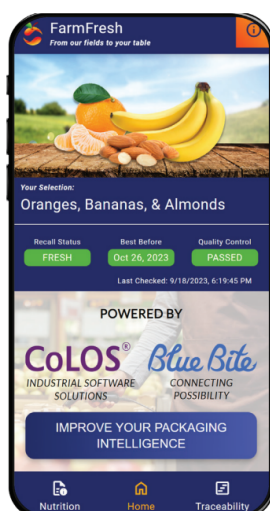
ENGAGEMENT & CIRCULARITY

- Engage directly with consumers
- Share brand authorised information and stories; upsell; offer ecommerce promotions, recipes etc.
- Promote and enable the circular economy through promoting recycling information
- Share farm-to-fork stories and tips on how to reduce waste

Scan for live demo



- Best before date
- Allergy warning
- Critical tracking events
- Lot aggregation
- Nutrition facts





LET OUR EXPERIENCE SOLVE YOUR CHALLENGES

Talk to us about what you need for compliance and optimum productivity. Our technology partnerships and years of experience will deliver solutions that are both affordable and effective for your business.

📍 60 Cawley Street, Auckland 1051

☎ +64 9 915 5555

✉ sales@mitech.co.nz

🌐 www.mitech.nz

🌐 linkedin.com/company/mitech-technology-group